

# SET YOUR CHILD FREE FROM LEARNING DIFFICULTIES



**0800 543 399**  
[www.developlearning.co.nz](http://www.developlearning.co.nz)



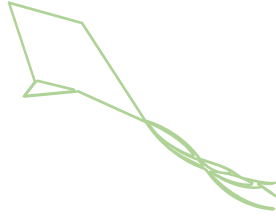
**Developmental  
Learning Centre**

Freedom from learning difficulties



# Our Mission

It is our goal and greatest delight to see each child being set free from their difficulties with the ability to learn and live to their full potential.



*Rosemary Murphy* Founder

# Welcome

to the Developmental Learning Centre.

We understand how concerned and confused you may be if your child is struggling in school, underachieving or having problems interacting socially and you're worried it might be due to a learning or behavioural difficulty. You might find it reassuring to know you are not alone. Over 20% of New Zealand children experience difficulties and by contacting us, you have taken an important first step in your quest to discover **why** your child is struggling so much.

By the time parents find our service, they are often at their wits' end, many having tried countless ways to address diagnoses such as dyslexia, dyspraxia, ADD, ADHD or Asperger's syndrome. What makes our approach different is that instead of looking at your child's symptoms on a superficial level, we look for the **underlying causes** and are then able to address the different physical, social, intellectual and emotional aspects to ensure lasting change.

Over the last 8 years we have set over a thousand children free from the sadness and frustration caused by learning difficulties. We welcome you to join us so that we can help you and your child on your journey to a brighter future.

“  
**Don't worry, you're not alone. 20% of children in NZ have learning difficulties**  
”

# How do we help children with learning or behavioural difficulties?

We specialise in treating children of all ages with difficulties including underachievement, dyslexia, dyspraxia, ADD, ADHD, Asperger's Syndrome, sensory integration difficulties and auditory processing disorders. Using a unique three-step process, we are able to ASSESS, IDENTIFY and then TREAT the underlying causes of your child's difficulties so they are able to live to their full potential.

## STEP 1.



We **ASSESS** the underlying causes of your child's difficulties

## STEP 2.



We **IDENTIFY** the best solution for your child's difficulties

## STEP 3.



We **TREAT** your child's underlying difficulties

---

## What therapies do we use?



### **AUDITORY RETRAINING THERAPY** (Integrated Listening Systems)

This therapy uses filtered music to mature the pathways in the brain needed to recognise different sounds when reading and spelling and to process spoken language quickly and efficiently. Music therapy is also used to treat children who are easily overwhelmed, hypersensitive and anxious, and have difficulty regulating their emotions.

---



### **DEVELOPMENTAL MOVEMENT THERAPY** (Extra Lesson™)

Central to this therapy is the idea that learning and behavioural difficulties are a result of developmental issues in a child's early years. This means the neural pathways and faculties needed for learning to be easeful do not fully develop and the child is not ready to learn. By repeating early childhood movement patterns, we are able to 'rewire' the brain to rebuild the pathways for success.

## Where are our centres located?

We have two centres - the original in Greerton, Tauranga and a satellite clinic in Parnell, Auckland. For those at distance from our centres, we can provide home-based therapy programs.



CASE STUDY

## Stephanie's Story

Eleven-year-old Stephanie's story could have ended very differently. A classic underachiever, she had spent years struggling academically and attempts to seek help from medical professionals had resulted in an ADHD diagnosis which Stephanie's mother was unconvinced by. After undertaking Auditory Retraining Therapy and Developmental Movement Therapy, she is now flying ahead in her learning.

*"Finding the Developmental Learning Centre was like a light at the end of the tunnel. Instead of labelling her ADHD, they were able to explain why Stephanie was experiencing learning difficulties and how to get help. After just two months of therapy, she went up two grades and hit national standard in reading and writing. She is much more confident in herself because she is actually achieving things."*

*Marieke Waghorn, Parent, KatiKati*

# How do I know if my child is going to benefit?

To help you understand initially if your child would benefit from our support we have put together a simple checklist of common symptoms found in children with learning or behavioural difficulties. If your child demonstrates 3 or more of the following symptoms, it is highly likely they will respond to our therapies.

- Is underachieving at school
- Is below expected levels in reading, spelling and mathematics
- Has good verbal ability but struggles with writing
- Is exhausted at the end of the school day
- Has poor fine motor skills
- Has an awkward pencil grip
- Is clumsy or accident prone
- Has poor balance and often falls over
- Struggles to learn new motor tasks
- Slouches and has poor posture when sitting at a desk
- Sits with their feet up at desk or table
- Skips lines or words when reading
- Loses their place often when copying from board
- Avoids reading and/or writing tasks
- Has poorly formed letters or untidy writing
- Often reverses numbers and letters
- Has difficulty getting ready for school
- Is disorganised, frequently loses things
- Has difficulty beginning and ending tasks
- Lacks independence expected for their age
- Gives up easily and tires quickly
- Resists doing homework
- Has difficulty following instructions
- Needs more repetition than usual
- Has poor short term memory
- Is often spaced out or 'away with the fairies'
- Is easily distracted with a short attention span
- Appears not to listen
- Has social difficulties and may have been bullied
- Withdraws from social interactions
- Is anxious and often gets a sore tummy on school days
- Is easily frustrated
- Prone to meltdowns before and /or after school/work

My child demonstrates several symptoms in the checklist. How can we help?

We have developed a simple three-step process to ASSESS, IDENTIFY and then TREAT the underlying causes of your child's learning difficulties.





CASE STUDY

# Nathan's Story

Nathan first came to the Developmental Learning Centre with a diagnosis of autistic spectrum disorder, suffering from huge anxiety levels and developmental delays. After receiving Auditory Retraining Therapy, all aspects of his difficulties disappeared and today he is a happy, confident child, excelling in all areas of his life.

*"It's like someone has plugged in the other half of my son that was missing before. He is learning so well and has gone from a 4-5 year old reading level to a second year intermediate level in just 12 months. Before he lived in an anxious dream world, now you can hold conversations with him about everyday things and we can go anywhere we like"*

*Karen Greenfield, Parent, Whakatane.*

## Get In Touch



Call 0800 543 399 to speak to one of our experienced team who will be able to answer any questions you may have.



Start your journey today by booking an assessment with one of our therapists

# Why choose the Developmental Learning Centre?



## A lasting solution

Our therapies are proven to work for children with learning and behavioural difficulties, helping them achieve success in learning and in life.



## A holistic approach

Every aspect of the child is taken into account (physical, emotional, social and intellectual) and the therapies used are holistic and multi- sensory.



## A wealth of experience

Our therapists have decades of teaching and clinical experience and are educated to post graduate level to ensure your child is getting the best support.



## A real support network

Our team are aware of the challenges families face and offer on-going support and encouragement every step of the way.



## A warm environment

Our centres are warm and nurturing environments that put children at ease so they can make the most of their therapy.

Contact us on

**0800 543 399**

[www.developlearning.co.nz](http://www.developlearning.co.nz)

